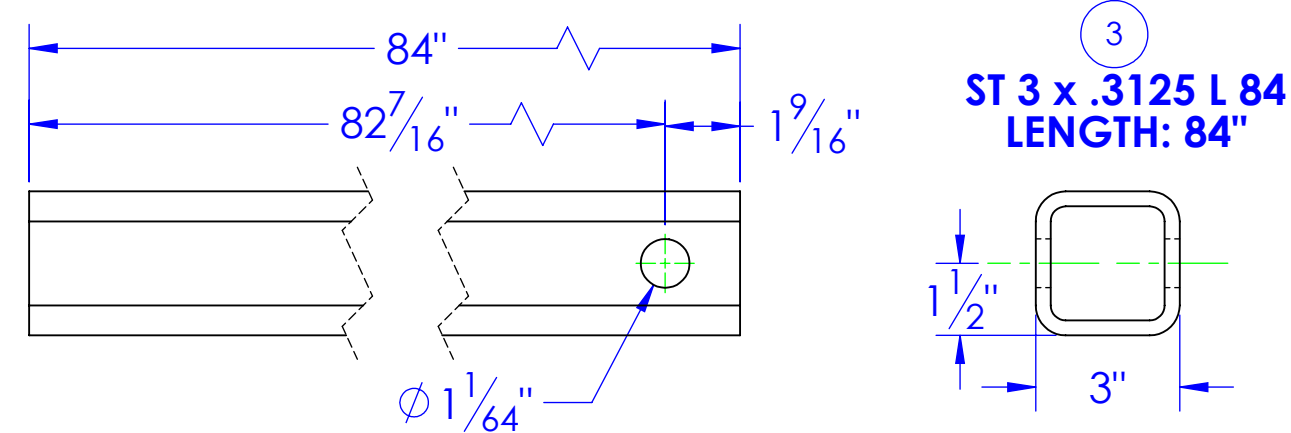
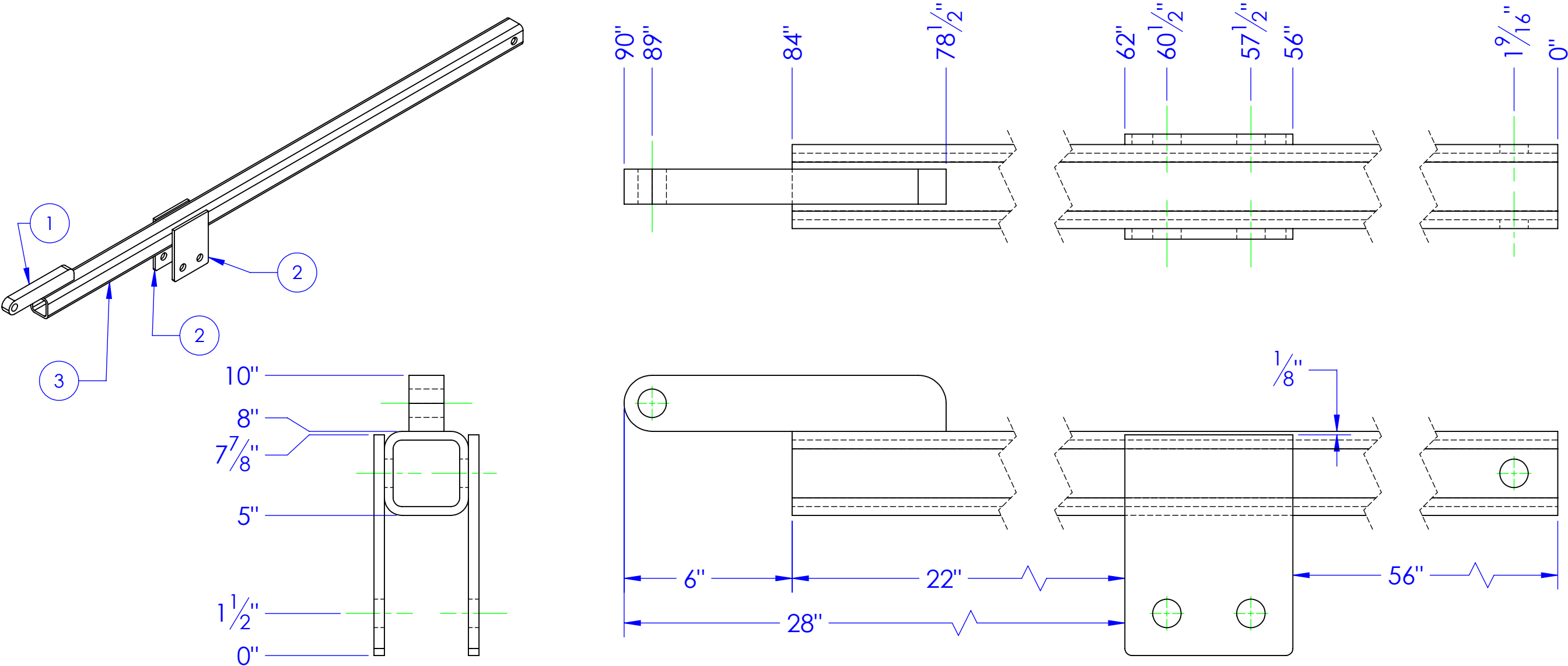


ITEM NO.	PART NUMBER	DESCRIPTION	MATERIAL	DRAWING #	QTY.
1	FP-TPF2-4	TOP HOLE LINKAGE PLATE	1-1/4" HRS	60-2107	1
2	FP-TPF2-5	LIFT ARM ADJUSTABLE PLATE	3/8" HRS	60-2108	2
3	ST 3 x .3125 L 84	LENGTH: 84"	ST 3 x 3 x 5/16	60-1108	1

REV.	REVISIONS	DATE	APPROVED
A	DESCRIPTION UPDATED TO NEW STANDARD DWG FROM TPF2-1	1/8/2013	



REQD QTY: 1

PROPRIETARY AND CONFIDENTIAL  
THE INFORMATION CONTAINED IN THIS  
DRAWING IS THE SOLE PROPERTY OF  
<INSERT COMPANY NAME HERE>. ANY  
REPRODUCTION IN PART OR AS A WHOLE  
WITHOUT THE WRITTEN PERMISSION OF  
<INSERT COMPANY NAME HERE> IS  
PROHIBITED.

UNLESS OTHERWISE SPECIFIED:  
DIMENSIONS ARE IN INCHES  
TOLERANCES:  
FRACTIONAL  $\pm 1/16$   
ANGULAR: MACH  $\pm 1$  BEND  $\pm$   
TWO PLACE DECIMAL  $\pm 0.10$   
THREE PLACE DECIMAL  $\pm 0.005$   
MATERIAL  
DO NOT SCALE DRAWING

	NAME	DATE	P.O. BOX 248, SABETHA KS. 66534 (785) 284-3674 FAX (785) 284-3931		
DRAWN	HEATH	1/8/2013	<div>TRIPLE C</div> <div>INC.</div>		
PART #					
ASM #	FP-TPF2-1				
COMMENTS: 3 POINT UPPER LINKAGE, HYDRA PHD.			SIZE B	DWG. NO. 60-1108	REV A
			SCALE: 1:4	WEIGHT: 91.23	SHEET 1 OF 1